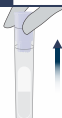


**SWIPPER™****TESTING KITS  
FOR DRUGS****CBD/THC  
(Cannabis Typification)  
Test Kits  
SW-3100****Read  
Before  
Use**

As a precaution, gloves and eye protection should be worn when handling substances and using test units. Do not puncture any part of unit. Do not remove probe after breaking the ampule. In event of a spill, rinse affected area thoroughly with water. Keep out of reach of children. Store the tubes in a dark place, not exposed to light. All results are presumptive. If necessary, further testing by a competent drug testing lab can provide additional identification.

**Test Preparation****1**

Remove the SWIPPER™ Cap from the test unit.



Ensure that the test tube remains upright in order to avoid the ampule falling out of the tube.

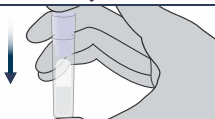
**2**

Sample the suspected substance or a drop a small amount of liquid.

Touch or Drop

**Test Preparation****3**

Return the SWIPPER™ Cap to the test tube. Press firmly.

**STOP**

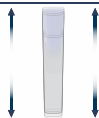
**Do not continue unless  
the SWIPPER™ Cap  
is properly secured.**

**Identification****4**

With **thumb and forefinger**, squeeze the test tube until the ampule breaks.

**5**

Gently shake test up and down to ensure that the liquid touches the Cap.

**Results**

The appearance of a green color indicates the presence of **THC** (Tetrahydrocannabinol), indicating the presence of the Cannabis/Drug Hemp where CBD is practically not present.

\* The color develops slowly and darkens over time.



The appearance of pink or purple color (that does not change to blue/turquoise within 3 minutes) indicates **CBD** (Cannabidiol) is dominant over THC, indicating the presence of Industrial Hemp.



If the reaction color changes to a blue/turquoise color within 3 minutes, **THC** is dominant over CBD, indicating the presence of Cannabis/Drug Hemp.



\* In case of suspected Cannabis/Drug Hemp, test with the Cannabis Test (SW-3300) to confirm the results. If none of the above colors develop, CBD and THC are not present.

**Disposal**

The test kit is safe to dispose of in the trash.

ENG  
v5  
01-22



World Leader in  
Forensic Products

Manufactured by IDenta Ltd  
www.identa-corp.com

Patented Technology • Made in Israel

**LOT:****EXP:**